

REED 5
Bari Sax

Jazz at Lincoln Center Library - Essentially Ellington

HARLEM AIRSHAFT

Composed by Duke Ellington
Transcribed by David Berger

Swing (♩ = 180)

Bari Sax

mf *f* *mf* *mp* *mp*

© 1943 (Renewed 1971) EMI ROBBINS CATALOG INC.

Rights for the Extended Term of Copyright in the U.S.A. Assigned to FAMOUS MUSIC CORPORATION

This Arrangement © 2002 FAMOUS MUSIC CORPORATION and EMI ROBBINS CATALOG INC.

Rights elsewhere throughout the world controlled by EMI ROBBINS CATALOG INC. (Publishing) and WARNER BROS. PUBLICATIONS U.S. INC. (Print)

JLCM02002

All Rights Reserved including Public Performance Used by Permission

D
ff *mf*

E
ff *mf*

F
ff *mf*

G

H
ff *mf*

I

First line of musical notation for section I, featuring a treble clef, a key signature of one flat, and a dynamic marking of *p*. The staff contains a series of notes and rests.

Second line of musical notation for section I, continuing the melodic line.

J

First line of musical notation for section J, featuring a treble clef, a key signature of one flat, and a dynamic marking of *p*.

Second line of musical notation for section J, continuing the melodic line.

K

First line of musical notation for section K, featuring a treble clef, a key signature of one flat, and various accidentals.

Second line of musical notation for section K, continuing the melodic line.

L

First line of musical notation for section L, featuring a treble clef, a key signature of one flat, and a dynamic marking of *p*.

Second line of musical notation for section L, continuing the melodic line.

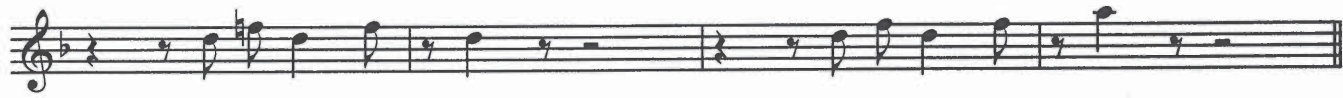
M



N



O



P

