

Prepare Letters D, M, N and W

# TRUMPET 1

# COTTONTAIL

Duke Ellington

Transcribed by David Berger and Brent Wallarab

**A** Fast swing ♩ = 234

6

Musical staff for section A, starting with a 6-measure rest followed by notes marked *mf*.

**B**

Musical staff for section B.

Musical staff for section B, second line.

**C**

**D**

8

Musical staff for sections C and D, starting with an 8-measure rest followed by notes marked *f* and *mf*.

**E**

**F**

8

7

Musical staff for sections E and F, starting with an 8-measure rest followed by a 7-measure rest and notes marked *mf*.

**G**

Musical staff for section G.

**H**

6

Musical staff for section H, starting with a 6-measure rest followed by notes marked *ff*.

**I**

**J**

**K**

8

8

Musical staff for sections I, J, and K, starting with two 8-measure rests followed by notes marked *f*.

**L**

**M**

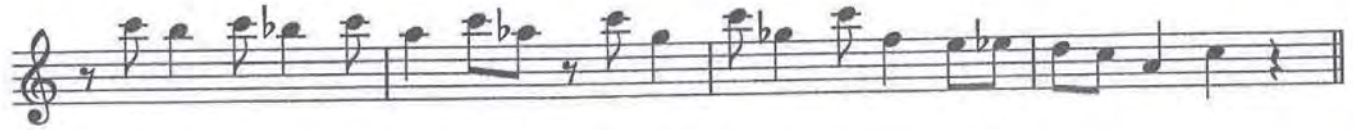
tight and clipped

8

Musical staff for sections L and M, starting with an 8-measure rest followed by notes.

Musical staff for section M, second line.

N



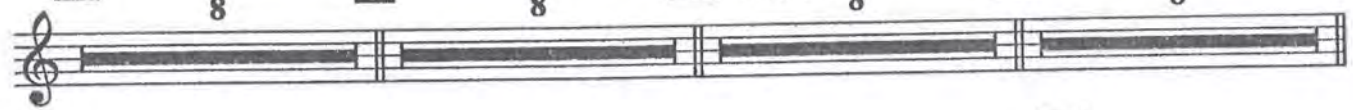
O

P

Q

Sax. soli

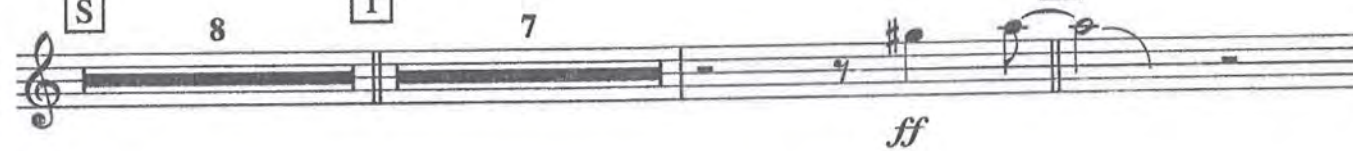
R



S

T

U



*ff*



V



W



X

