

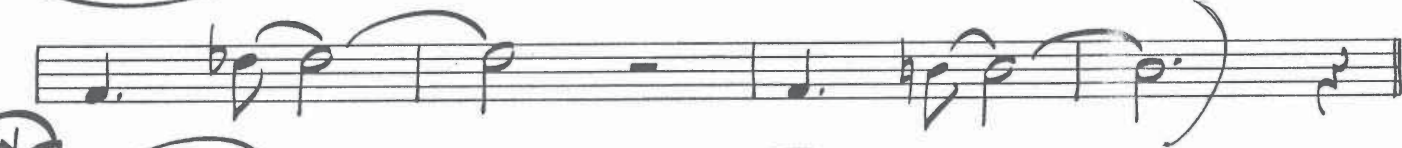
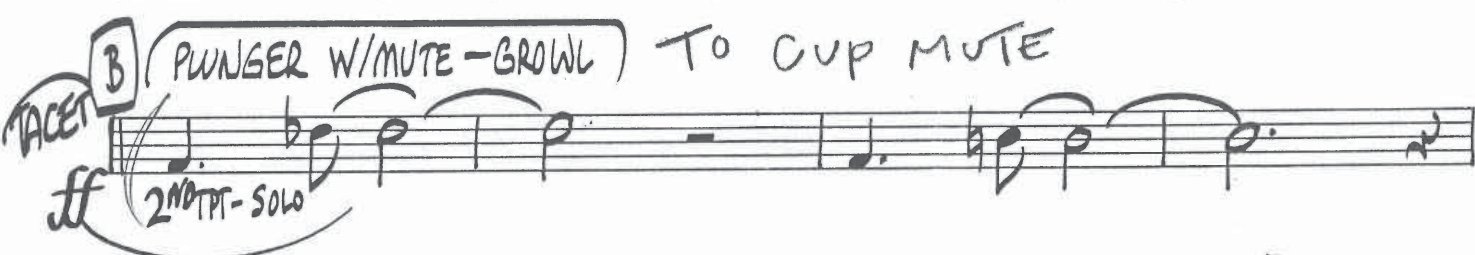
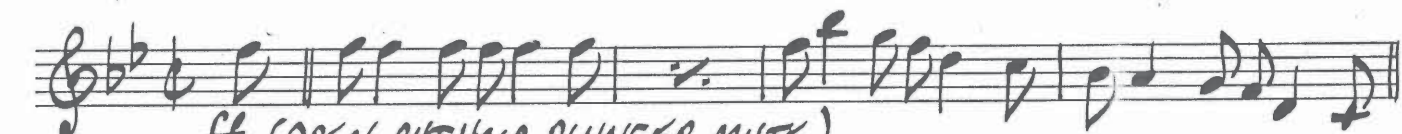
TRUMPET 1

44

Braggin' in Brass

Duke Ellington
Transcribed by David Berger

FAST SWING ($\text{♩} = 159$)



TPT 1

2.

BRAGGIN' IN BR5

D

E

F

G OPEN (TAKE OUT MUTE)

H

I

J

TPT 1
 (K) TPT 3 SOLO C7
 TACET 3 (TILL SB)
 3.
 BRAGGIN' IN BRS
 2

F HALF-X FEEL mf
 C7 F F#0

(L) C7
 F C7 F C7

(M) F BREAK
 F BREAK C7 C7

(N) F BREAK
 F BREAK C7 C7

(O) C7
 G7 C7 F F7

(P) D7

(Q) D7

(R) D7

(S) D7

TPT 1 4. BRAGGIN' IN BR5

P Bb (DBL-X FEEL) F9+5

Bb F7 F0

Q F7 Bb BREAK F9+5

R Bb Bb7 Eb Bb7

S Eb E0 Bb G7

C7 F9+5 Bb 3 PLAY

T 2 2

TPT. 1

5.

BRAGGIN' IN BR5

U

Musical staff for instrument U. It begins with a treble clef, a key signature of two flats (Bb and Eb), and a common time signature. The notation includes a quarter rest, a quarter note with a fermata, a quarter rest, a quarter note with a fermata, and a quarter rest. A handwritten '2' and a sharp sign are at the end of the staff.

Musical staff for instrument U. It begins with a quarter note with a fermata, a quarter rest, and a quarter note with a fermata. A handwritten '3' is above the staff.

V

Musical staff for instrument V. It begins with a quarter rest, a quarter note with a fermata, a quarter note with a fermata, and a quarter rest. A handwritten '2' and a sharp sign are at the end of the staff.

Musical staff for instrument V. It begins with a quarter rest, a quarter note with a fermata, a quarter note with a fermata, and a quarter rest. A handwritten '2' is above the staff.

W

Musical staff for instrument W. It begins with a quarter rest, followed by eighth notes, quarter notes, and eighth notes. A handwritten '2' and a sharp sign are at the end of the staff.

Musical staff for instrument W. It begins with a quarter rest, followed by eighth notes, quarter notes, and eighth notes. A handwritten '2' is above the staff.

X

Musical staff for instrument X. It begins with a quarter rest, a quarter note with a fermata, a quarter note with a fermata, and a quarter rest. A handwritten '2' and a sharp sign are at the end of the staff.

Musical staff for instrument X. It begins with a quarter note with a flat, a quarter note with a flat, a quarter note, a quarter note with a flat, a quarter note, a quarter note with a sharp, a quarter note with a sharp, and a quarter note.

Y

Musical staff for instrument Y. It begins with a quarter note with a fermata, a quarter note with a fermata, a quarter note with a fermata, a quarter note with a fermata, a quarter note with a fermata, and a quarter note with a fermata.

Musical staff for instrument Y. It begins with a quarter note with a sharp, a quarter note with a sharp, a quarter note with a sharp, a quarter note with a sharp, a quarter note with a sharp, a quarter note with a sharp, a quarter note with a sharp, and a quarter note with a sharp. A handwritten 'f' is below the staff.